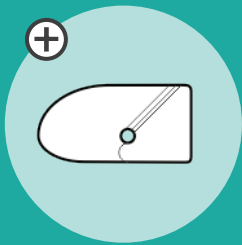
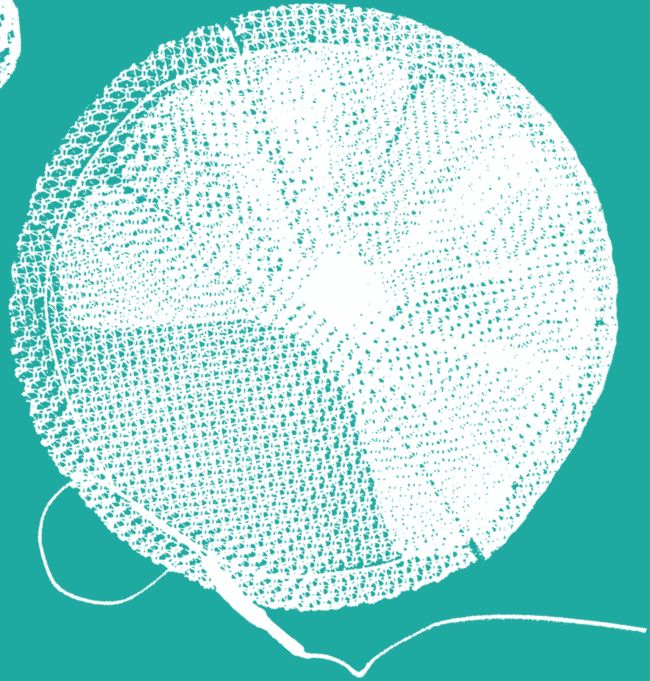
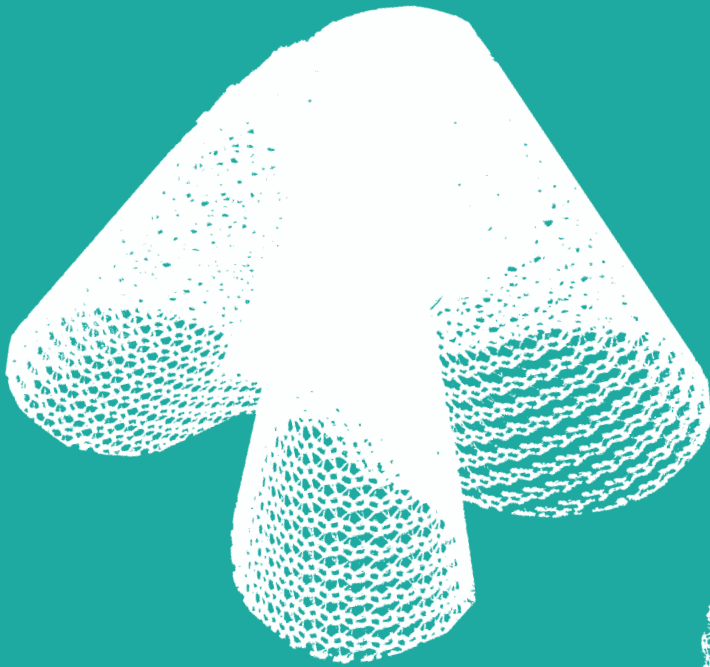


PLUG+LF



INGUINAL HERNIA LAPAROTOMY



Patch and simple
plug or sublay plug kit,
for open surgery.

90G / M²
POROSITY > 77%



PICTURES	SIZES	STANDARD POLYPROPYLENE
	Ø7cm + 6x12	411 703
	Ø7cm + 7x12	411 702
	Ø9cm + 5x10	411 901
	Ø9cm + 7x12	411 902
	Ø9cm + 9x13	411 904
	Ø9cm + 5x10	413 008
	Ø9cm + 6x12	413 009
	Ø9cm + 7x12	413 006