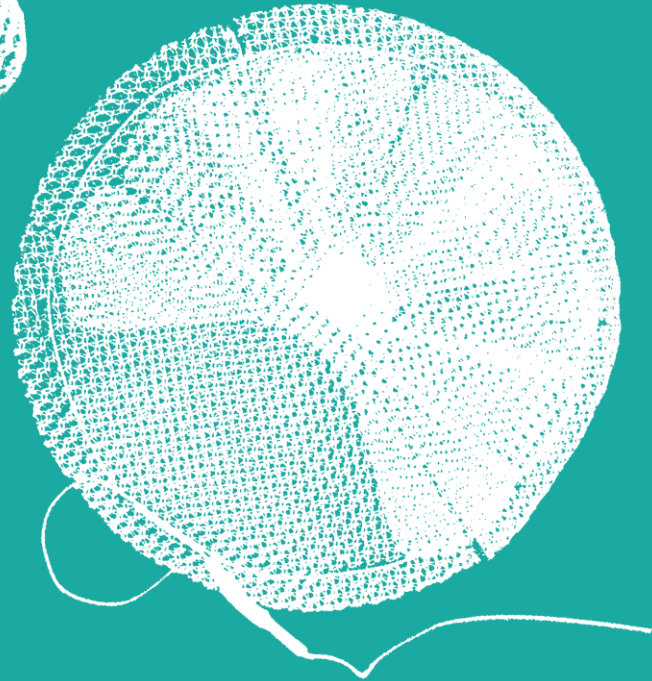
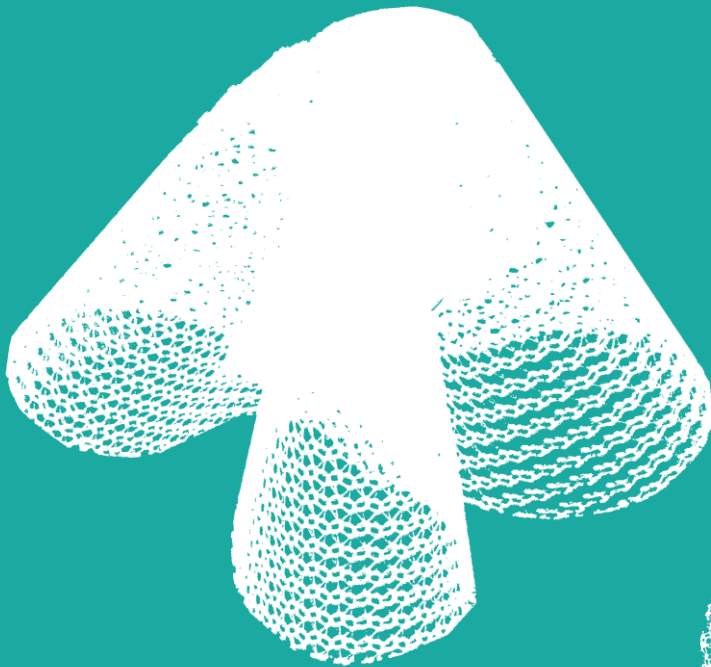


PLUG+LF



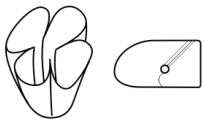

INGUINAL HERNIA LAPAROTOMY



*Patch and simple
plug or sublay plug kit,
for open surgery.*

90G / M²
POROSITY > 77%



	cm	STANDARD POLYPROPYLENE
 PLUG-S + LF	Ø7 + 6x12	411 703
	Ø7 + 7x12	411 702
	Ø9 + 5x10	411 901
	Ø9 + 7x12	411 902
	Ø9 + 9x13	411 904
 PLUG-P + LF	Ø9 + 5x10	413 008
	Ø9 + 6x12	413 009
	Ø9 + 7x12	413 006