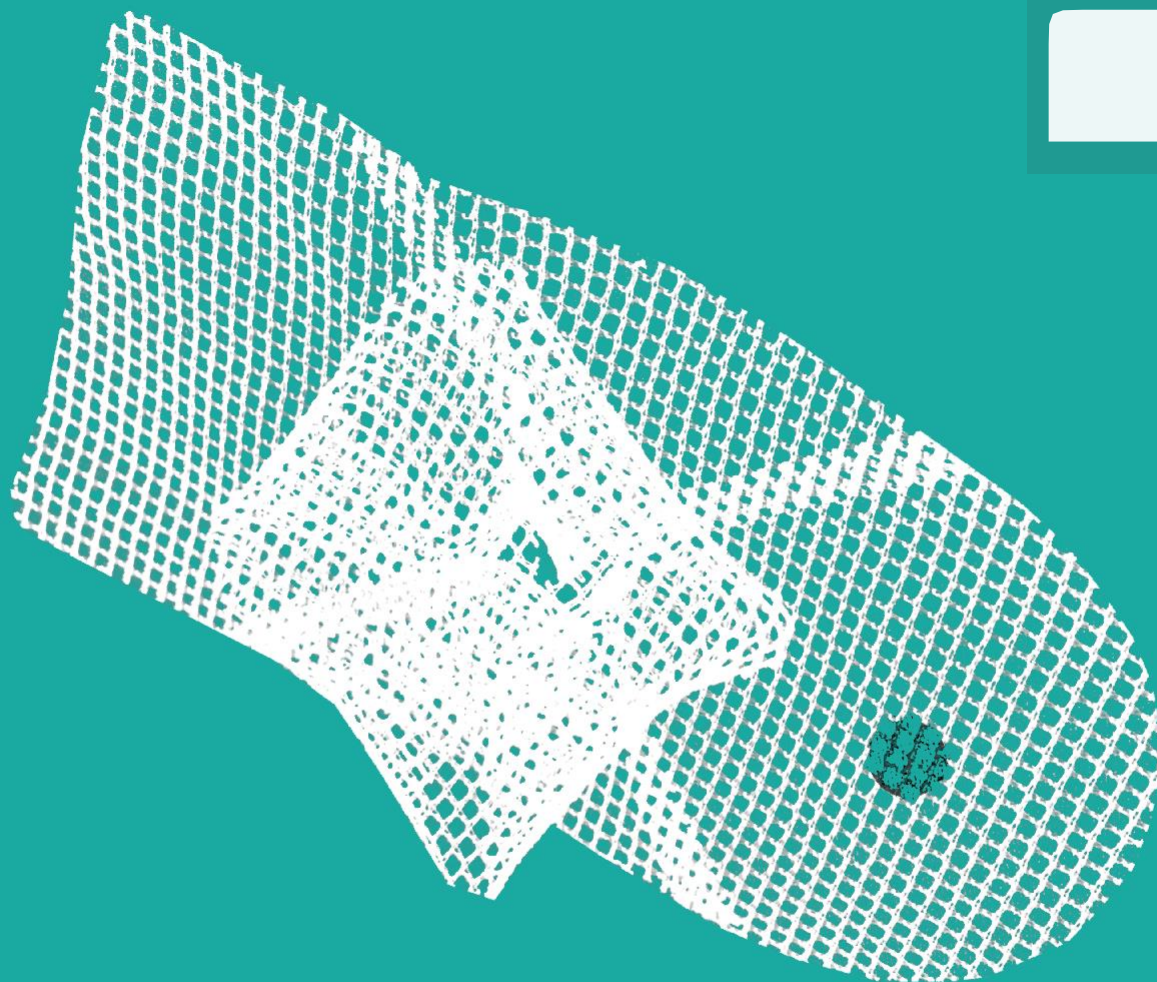


PB



INGUINAL HERNIA

LAPAROTOMY



*Plug and Patch
in a single implant for
onlay/sublay surgery.*

90G / M²
POROSITY > 77%



	cm	STANDARD POLYPROPYLENE
	Ø5 + 5x10	411 105
	Ø6 + 6x12	411 126
	Ø8 + 8x14	411 148